

othelial_Epitope__HBME_- 1_In_Differentiating_Thyroid_Les ions.pdf

by

FILE	OTHELIAL_EPITOPE__HBME_- 1_IN_DIFFERENTIATING_THYROID_LESIONS.PDF (677.56K)		
TIME SUBMITTED	24-JAN-2021 03:54PM (UTC+0700)	WORD COUNT	2371
SUBMISSION ID	1493133105	CHARACTER COUNT	13220

9 The Utility Of Galectin-3 And Hector Battifora Mesothelial Epitope (HBME)-1 In Differentiating Thyroid Lesions

Upik Anderiani Miskad¹, Winny Natacia Leiwakabessy², Meilany Feronika Durry³, Halidah Rahawarin⁴, Muhammad Husni Cangara⁵, Truly Djimahit⁶

16
^{1,2,3,4,5,6} Department of Pathology Anatomy, Faculty of Medicine, Hasanuddin University,
Makassar

E-Mail ¹upik.miskad@gmail.com

6
15
Abstract. The aim of this study is to determine the utility of galectin-3 and HBME-1 in the differentiation between benign and malignant thyroid lesions. We evaluated the immunohistochemical expression of 64 thyroid lesions including non-neoplastic lesions and neoplastic lesions. Galectin-3 immunostaining was positive in 100% of papillary carcinomas, 62.5% of follicular carcinomas, 18.8% of follicular adenomas and negative in all nodular goiter as non-neoplastic lesions. HBME-1 immunostaining was positive in 93.8% of papillary carcinomas, 81.3% of follicular carcinomas, 25% of follicular adenomas and negative in all nodular goiter. There was a significant difference between benign and malignant thyroid lesion for galectin-3 and HBME-1 ($p < 0.001$). The sensitivity, specificity, positive predictive values and negative predictive values for HBME-1 and galectin-3 is over 80%. When both markers are combined, the values of each predictive parameter were 93.75%, 81.25%, 83.33% and 92.85%. The diagnostic accuracy for both markers was 87.50%. Combining both markers will be more helpful to differentiate malignant and benign thyroid lesions.

1. INTRODUCTION

Thyroid lesions can be found as benign and malignant. Definitive diagnosis is not always easy to define because morphologic similarities between them are often frequent. Sometimes the same patterns could be found in both malignant and benign lesion. By using routine hematoxylin and eosin (HE), in some tumors, subjective interpretation and interobserver variation among pathologist are well documented. This condition led the pathologist to search for additional diagnostic markers to define more accurate diagnosis because the treatment of thyroid lesions depends on the diagnosis [1,2].

Galectin-3 translated by gene located on chromosome 14q21-22 categorized as a beta galactosidase binding protein [3,4]. This protein has a function in cycle cell, angiogenesis, carcinogenesis and metastasis. Galectin-3 involved in many tumors like carcinoma thyroid, glioblastoma, breast cancer, limfoma, malignant melanoma, pancreatic cancer, colorectal cancer and gastric cancer [3-6]. In thyroid carcinoma, galectin-3 was reported work through K-Ras GTP and Ras signal pathway [7]. Some studies showed that galectin-3 staining was detected more frequent in malignant thyroid lesions, meanwhile it was decreased or not detected in benign thyroid lesions but another studies reported that Galectin-3 alone did not enough as a single marker in distinguishing thyroid tumors [8-12].

Hector Battifora Mesothelial Epitop (HBME)-1 was also reported increase reactivity with mostly papillary and follicular thyroid carcinoma, while adenomas are mainly negative. It is expressed in cytoplasm and cytoplasmic membrane like galectin 3 [13,14].

Thyroid neoplasms usually found by clinician as a simple nodule or multinodular goiter form, which is defined as thyroid nodules [15]. As mention above that by microscopic examination using HE only, it sometimes makes a different interpretation between pathologists. So, in this research, we studied the immunoeexpression of galectin-3 and HBME-1 as a single and combine additional markers to define the thyroid lesions.

2. MATERIAL AND METHODS

2.1. Samples

Sample collection of paraffin block and all research activities were done in Hasanuddin University Hospital, Makassar, Indonesia. Sixty four samples from surgical resection of thyroid lesion were used in this study.

2.2. Immunohistochemistry

Two consecutive 4 μ m sections were cut for HE staining and immunohistochemical study. Immunohistochemical staining was performed using Envision peroxidase detection system (Dako, Denmark). Immunohistochemical staining was perform using the primary anti human galectin-3 antibody (Novocastra) and anti human HBME-1 antibody (Dako) with the same dilution (1:100) and then incubated with labeled polymer Envision (Dako) for 60 min.

Slide were then evaluated by 3 independent observer (UM, MD, HC). Immunoreactivity of galectin-3 and HBME-1 were graded in 4 scoring level according to number of positive cells in % and the intensity of DAB color in all area of thyroid lesion each slide. Both proteins were positive when stained in the cytoplasm and score as follows: score 0, +1, +2 and +3. Score 0 and +1 were categorized negative, whereas score 2 and 3 were grouped as positive.

3. RESULTS

Sixty four samples of thyroid lesions were evaluated in this study. It was found that range of patient's age were between 22 to 81 years old. Most patients were female (87.5%), only 12.5% of patients were male. Characteristic samples were found in Table 1. All samples of thyroid lesion were stained with galectin-3 and HBME-1 antibody and associated with the features microscopic diagnosis as shown in Table 2. This table showed that there were a significant difference between galectin-3 expression, HBME-1 expression and group of histopathology ($p < 0.001$).

Table 1. Characteristic of samples.

Characteristic of Samples	No. cases	%	
Age	22-41 years old	40	62.5
	42-61 years old	18	28.1
	62-81 years old	6	9.4
Sex	Male	8	12.5
	Female	56	87.5
Diagnosis	Nodular Goiter	16	25
	Follicular Adenomas	16	25
	Follicular Carcinomas	16	25
	Papillary Carcinomas	16	25

Table 2. Galectin-3, HBME-1 and histopathology subgroup.

	Histopathology										p	
		Nodular Goiter		Follicular Adenomas		Follicular Carcinomas		Papillary Carcinomas		Total		
		n	%	n	%	n	%	n	%	n		%
Galectin-3 Expression	Negative	16	100.0	13	81.3	6	37.5	0	0.0	35	54.7	<0.001
	Positive	0	0.0	3	18.8	10	62.5	16	100.0	29	45.3	
HBME-1 Expression	Negative	16	100.0	12	75.0	3	18.8	1	6.3	32	50.0	<0.001
	Positive	0	0.0	4	25.0	13	81.3	15	31.3	32	50.0	

In table 3, the histopathological diagnosis was categorized into 2 groups, benign and malignant lesion. Nodular goiter and follicular adenomas were categorized as benign thyroid lesion, follicular carcinomas and papillary carcinomas were labeled as malignant thyroid lesion. Galectin 3 was more frequent in carcinoma than nodular goiter and follicular adenomas. Both markers have the same results, $p < 0.001$. Representative immunostaining for both markers were shown in Figure 1 and 2.

Table 3. Galectin-3, HBME-1 in thyroid lesions.

		Thyroid lesion				Total		p
		Malignant		Benign		n	%	
		n	%	n	%			
Galectin-3 Expression	Negative	6	18.8	29	90.6	35	54.7	<0.001
	Positive	26	81.3	3	9.4	29	45.3	
HBME-1 Expression	Negative	4	12.5	28	87.5	32	50.0	<0.001
	Positive	28	87.5	4	12.5	32	50.0	

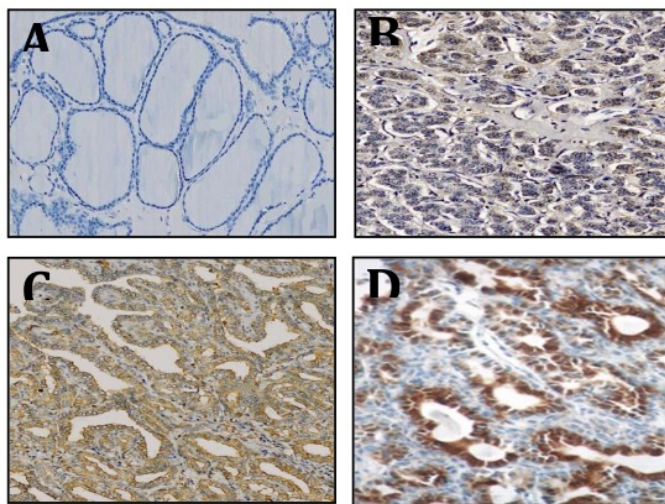


Figure 1 Immunostaining of Galectin-3 (A) Nodular goiter (-), (B) Follicular adenoma (+1), (C) Papillary carcinoma (+2), (D) Follicular carcinoma (+3)

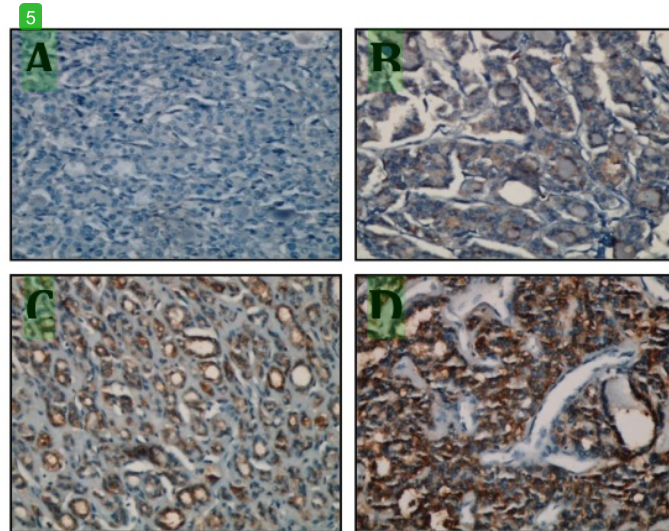


Figure 2 Immunostaining of HBME-1 (A) Nodular goiter (-), (B) Follicular adenoma (+1), (C) Follicular carcinoma (+2), (D) Papillary carcinoma (+3)

Diagnostic value for both markers was shown in Table 4. When combining both markers, the value of each parameter become 93.75% for sensitivity, 81.25% for specificity, 83.33% for positive predictive value (PPV), 92.85% for negative predictive value (NPV) and 87.50% for diagnostic accuracy. All value above 80% and some of them above 90%.

Table 4. Diagnostic value.

	Sensitivity (%)	Specificity (%)	PPV (%)	NPV (%)	Diagnostic Accuracy (%)
Galectin-3	81.25	90.62	89.65	82.85	85.93
HBME-1	87.50	87.50	87.50	87.50	86.15
Galectin-3 & HBME-1	93.75	81.25	83.33	92.85	87.50

4. DISCUSSION

In this study, we analysed the diagnostic accuracy of galectin-3 and HBME-1 in thyroid lesion. Both marker has been studied in previous study by using immunohistochemistry but the result is quite varied. They recommended Galectin-3 as an accurate marker for thyroid carcinoma, especially papillary carcinoma [14,16-20]. However, this marker still need to be elucidated.

Our study showed that Galectin-3 immunostaining predominantly positive in carcinoma, a few positive in adenomas and totally negative in nodular goiter. Our results consistent with some studies which reported that Galectin-3 immunoexpression was increased in all malignant neoplasms and only few samples (3 – 12%) of benign lesions were stained positively [2,7,14,18]. However, another study reported that Galectin-3 was totally undetected in all non-malignant lesions [21-22]. When we found that some samples of follicular adenomas were positive-stained for Galectin-3, we assume that these lesions might be in the level of in malignant transformation which still occur in molecular level not in phenotype level yet. Actually for diagnosing the follicular thyroid carcinoma, the histopathologic appearance not just enough with classical atypical performance such as hypercellularity, increase of nucleus and cytoplasm ratio, and mitosis, but also required a distinct vascular and capsular invasion. Another explanation may easy to understand that in those cutting specimens there was no malignant areas. There might be some little focus of malignancy that could be detected in another area of tumor tissue but not in these evaluated-slides. This condition sometimes found in papillary thyroid carcinoma as an occult cancer. In other words, Galectin-3 expression still could be helpful to define the diagnosis of follicular adenoma which tend to develop become follicular thyroid carcinoma or malignancy. This information from pathologist will help the clinician to consider a possibility of malignancy in suspected adenoma specimens and prepare more comprehensive management for the patients. Compared with benign neoplasms, HBME-1 was highly detected in both carcinomas than follicular adenomas, but there was no significant difference between both malignant neoplasms. It means HBME-1 can be applicable as a marker for carcinomas, but not reliable to distinguish follicular carcinomas and papillary carcinomas.

We found that both markers were have excellent diagnostic value for thyroid malignancy. The first marker as a beta galactosidase binding protein was the most specific, especially for papillary thyroid carcinoma. The second marker seems to be a sensitive marker for both papillary carcinoma and follicular carcinoma. Combination of these markers increase sensitivity about 10% and become more applicable.

Since specificity and sensitivity of both markers in this study were almost 100%, it could be said that detection by immunohistochemical method may useful as an additional test beside H.E. staining as a standard method. Furthermore, if the morphological characteristic of carcinoma was so clear by Hematoxylin eosin staining, of course immunostaining of both markers, single or combine was not required.

In conclusion, Galectin-3 and HBME-1 could be applicable as additional staining in differentiating diagnosis of thyroid lesions.

REFERENCES

- [1] Rosai J *et al* 2017 *WHO Classification of Tumours of Endocrine Organs* vol 10, ed Lloyd RV, Osamura RY, Klöppel G and Rosai J (Geneva: WHO Press) p 65-144
- [2] Prasad ML, Pellegata NS, Huang Y, Nagaraja HN, de la Chapelle A, Kloos RT 2005 Galectin-3, fibronectin-1, CITED-1, HBME-1 and cytokeratin-19 immunohistochemistry is useful for the differential diagnosis of thyroid tumors *Mod Pathol.* **18** 48-57
- [3] Krzeslak A and Lipinska A 2004 Galectin-3 as a multifunctional protein *Cell Mol Biol Lett.* **9** 305-28
- [4] Chiu CG *et al* 2010 Diagnostic utility of galectin-3 in thyroid cancer *Am J Pathol.* **176** 2067-81
- [5] Ringel MD 2005 Diagnostic molecular markers in thyroid cancer *Boston: Kluwer academic publisher* 295-316

- [6] Kim HR, Lin HM, Biliran H and Raz A 1999 Cell cycle arrest and inhibition of anoikis by galectin-3 in human breast epithelial cells *Cancer Res.* **59** 4148-54
- [7] Levy R, Grafi-Cohen M, Kraiem Z, Kloog Y 2010 Galectin-3 promotes chronic activation of K-Ras and differentiation block in malignant thyroid carcinomas *Mol Cancer Ther* **9** 2208-19
- [8] Bryson PC, et al 2008 Immunohistochemical distinction of follicular thyroid adenomas and follicular carcinomas *Arch Otolaryngol Head Neck Surg.* **134** 581-6
- [9] Inohara H, et al 2008 Cytoplasmic and serum galectin-3 in diagnosis of thyroid malignancies *Biochem Biophys Res Commun.* **376** 605-10
- [10] Liu YY *et al* 2008 Combined immunostaining with galectin-3, fibronectin, CITED-1, Hector Battifora Mesothelial-1, cytokeratin-19, peroxisome proliferator-activatedreceptor-(gamma), and sodium/iodide symporter antibodies for the differential diagnosis of non-medullary thyroid carcinoma *Eur J Endocrinol* **158** 375-84
- [11] Türköz HK, Öksüz H, Yurdakul Z, Ozcan D 2008 Galectin-3 expression in tumor progression and metastasis of papillary thyroid carcinoma *Endocr Pathol* **19** 92-6
- [12] Oestreicher-Kedem Y *et al* 2004 Diagnostic value of galectin-3 as a marker for malignancy in follicular patterned thyroid lesions *Head Neck* **26** 960-6
- [13] Papotti M, Rodriguez J, De Pompa R, Bartolazzi A, Rosai J 2005 Galectin-3 and HBME-1 expression in well-differentiated thyroid tumors with follicular architecture of uncertain malignant potential *Modern Pathology* **18** 541-546
- [14] Rossi ED *et al* 2006 Simultaneous immunohistochemical expression of HBME-1 and galectin-3 differentiates papillary carcinomas from hyperfunctioning lesions of the thyroid *Histopathology* **48** 795-800
- [15] Riesco-Eizaguirre G and Santisteban P 2007 New insights in thyroid follicular cell biology and its impact in thyroid cancer therapy *Endocr Relat Cancer.* **14** 957-77
- [16] Park YJ *et al* 2007 Diagnostic value of galectin-3, HBME-1, cytokeratin-19, high molecular weight cytokeratin, cyclin D1 and p27(kip1) in the differential diagnosis of thyroid nodules *J Korean Med Sci.* **22** 621-8
- [17] Ito Y *et al* 2005 Galectin-3 expression in follicular tumours: an immunohistochemical study of its use as a marker of follicular carcinoma *Pathology* **37** 296-8
- [18] Londero SC *et al* 2008 Papillary microcarcinoma of the thyroid gland: is the immunohistochemical expression of cyclin D1 or galectin-3 in primary tumour an indicator of metastatic disease? *Acta Oncol* **47** 451-7
- [19] Sapio MR *et al* 2007 Combined analysis of galectin-3 and BRAFV600E improves the accuracy of fine needle aspiration biopsy with cytological findings suspicious for papillary thyroid carcinoma. *Endocr Relat Cancer* **14** 1089-97
- [20] Cvejic DS, Savin SB, Petrovic IM, Paunovic IR, Tatic SB, Havelka MJ 2005 Galectin-3 expression in papillary thyroid carcinoma: relation to histomorphologic growth pattern, lymph node metastasis, extra thyroid invasion, and tumor size *Head Neck* **27** 1049-55
- [21] Collet JF *et al* 2005 Galectin-3 immunodetection in follicular thyroid neoplasms: a prospective study on fine needle aspiration samples *Br J Cancer* **93** 1175-81
- [22] Bartolazzi A *et al* 2008 Thyroid cancer imaging in vivo by targeting the anti-apoptotic molecule galectin-3 *PLoS One* **3** e3768

othelial_Epitope__HBME_-
1_In_Differentiating_Thyroid_Lesions.pdf

ORIGINALITY REPORT

% **12**
SIMILARITY INDEX

% **8**
INTERNET SOURCES

% **12**
PUBLICATIONS

% **0**
STUDENT PAPERS

PRIMARY SOURCES

1 www.ncbi.nlm.nih.gov %**2**
Internet Source

2 Sergey G. Vesnin, Mikhail K. Sedankin, Lev M. Ovchinnikov, Alexander G. Gudkov et al. %**2**
"Portable microwave radiometer for wearable devices", Sensors and Actuators A: Physical, 2021
Publication

3 pt.scribd.com %**1**
Internet Source

4 Hidenori Inohara, Yuichiro Honjo, Tadashi Yoshii, Shiro Akahani et al. "Expression of galectin-3 in fine-needle aspirates as a diagnostic marker differentiating benign from malignant thyroid neoplasms", Cancer, 1999 %**1**
Publication

5 www.turkjpath.org %**1**
Internet Source

www.viamedica.pl

6

Internet Source

% 1

7

sajr.org.za

Internet Source

% 1

8

Abd-El Raouf, Samar M., and Taiseer R. Ibrahim. "Immunohistochemical expression of HBME-1 and galectin-3 in the differential diagnosis of follicular-derived thyroid nodules", *Pathology - Research and Practice*, 2014.

Publication

% 1

9

Liborio Torregrossa, Pinuccia Faviana, Tiziano Camacci, Gabriele Materazzi et al. "Galectin-3 is highly expressed in nonencapsulated papillary thyroid carcinoma but weakly expressed in encapsulated type; comparison with Hector Battifora mesothelial cell 1 immunoreactivity", *Human Pathology*, 2007

Publication

% 1

10

Figen Barut. "Universal Markers of Thyroid Malignancies: Galectin-3, HBME-1, and Cytokeratin-19", *Endocrine Pathology*, 03/03/2010

Publication

<% 1

11

P Mehrotra. "Galectin-3 does not reliably distinguish benign from malignant thyroid neoplasms", *Histopathology*, 11/2004

Publication

<% 1

12

Dubravka S. Cvejic, Svetlana B. Savin, Ivana M. Petrovic, Ivan R. Paunovic, Svetislav B. Tatic, Marija J. Havelka. "Galectin-3 expression in papillary thyroid carcinoma: Relation to histomorphologic growth pattern, lymph node metastasis, extrathyroid invasion, and tumor size", Head & Neck, 2005

Publication

<% 1

13

diagnosticpathology.biomedcentral.com

Internet Source

<% 1

14

www.ulusalcerahidergisi.org

Internet Source

<% 1

15

Abd-El Rahman, Aziza E., and Amira A. Salem. "Diagnostic value of galectin-3 and HBME-1 expression in follicular thyroid tumors :", Egyptian Journal of Pathology, 2015.

Publication

<% 1

16

Asmaa Gaber Abdou, Mostafa A Hammam, Shawky El Farargy, Azza G A Farag et al. "Diagnostic and Prognostic Role of Galectin 3 Expression in Cutaneous Melanoma", The American Journal of Dermatopathology, 2010

Publication

<% 1

17

Young Joo Park, Soo Heon Kwak, Dong Chul Kim, Haeryoung Kim et al. "Diagnostic Value of Galectin-3, HBME-1, Cytokeratin 19, High

<% 1

Molecular Weight Cytokeratin, Cyclin D1 and p27kip1 in the Differential Diagnosis of Thyroid Nodules", Journal of Korean Medical Science, 2007

Publication

EXCLUDE QUOTES ON
EXCLUDE ON
BIBLIOGRAPHY

EXCLUDE MATCHES < 5
WORDS